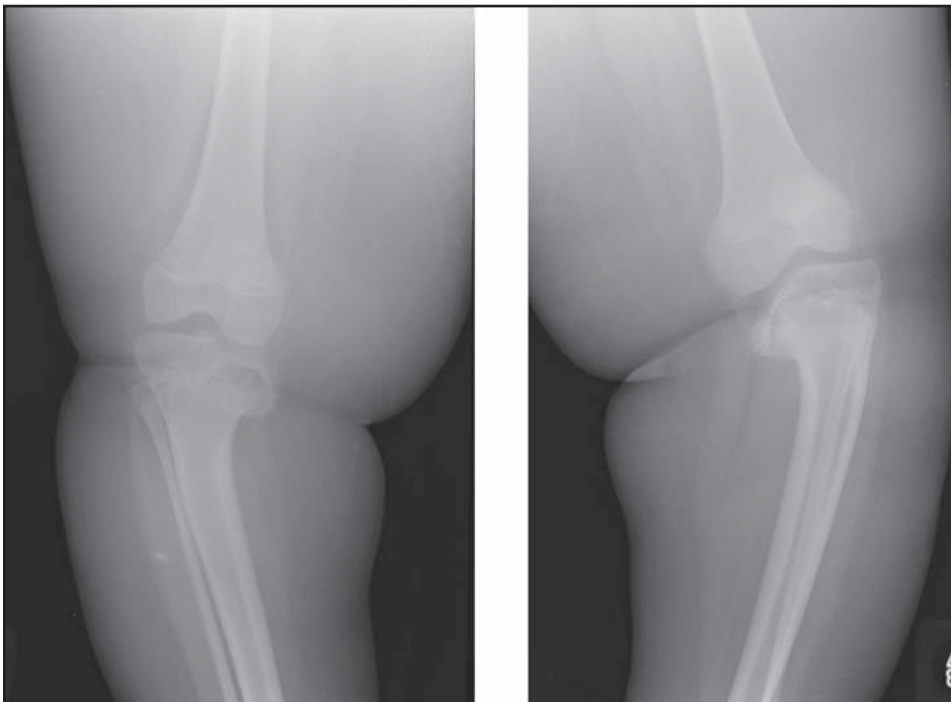


**Figure 19-3.** Clinical photo of an 8-year-old obese girl with bilateral genu varum secondary to early-onset Blount disease. She had progressive bowing of both knees starting at age 2 years.



**Figure 19-4.** Anteroposterior radiograph of both knees of the obese child with Blount disease shown in Figure 19-3. Besides the genu varum, irregularity of the medial aspect of the proximal tibial growth plate (physis) is also noted.